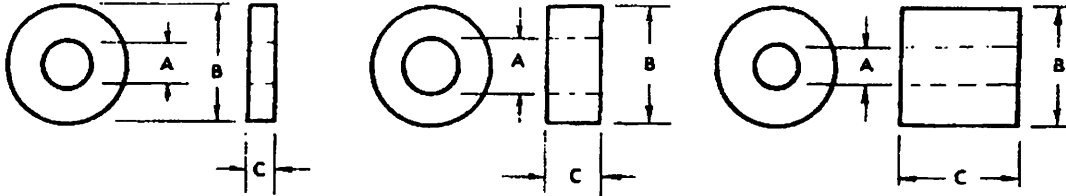


Washers

Plain Bearings, Washers, Stand-Offs

- Standard material is Dupont #101 Nylon, natural color.
- Prices subject to change without notice.



PART NO.	A HOLE	B O.D.	C LENGTH
N5990	.260	.378	.176
N5551-1	.263	.565	.565
N6164	.269	.500	.218
N306	.272	.630	.250
N5329	.273	.610	.250
N5285	.281	.758	.126
N6049	.289	.347	.339
N2112	.294	.614	.932
N5604	.308	.553	.485
N5872-2	.308	.585	.132
N5-1	5/16	7/16	7/16
N5-1A	5/16	1/2	1/2
N5-2	5/16	9/16	9/16
N6327	.312	.625	.220
N6326	.312	.625	.156
N6325	.312	.625	.094
N5525-2	.314	.808	.427
N6904	.315	5/8	.065
N5525-1	.317	.750	.432
N6836	.318	.442	.880
N5852	.319	.433	.942
N6892	.319	7/8	1/4
N6122	.317	.525	.095
N2110	.340	.731/.742	.975
N6-1-ND287	3/8	1/2	1/2
N6-1A	3/8	9/16	9/16
N6-2	3/8	5/8	5/8
ND343	3/8	3/4	3/22
N6721-1	21/64	1	3/16

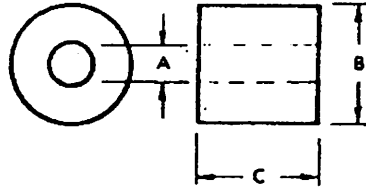
PART NO.	A HOLE	B O.D.	C LENGTH
N6795	.377	.497	2.018
N5842	.378	.504	.375
N6948	.378	.750	1
N6044	.380	.506	1.002
ND53	.380	9/16	.160
N189	.381	.525	.093
N5065	.381	.562	.060
ND64	.382	47/64	1/16
N6749	.420	.657	.375
N6232-3	.495	.687	.234
N7-1-N187	7/16	9/16	9/16
N7-1A	7/16	5/8	5/8
N7-2	7/16	1 1/16	1 1/16
N6643	.500	.625	.168
N8-1-N226	1/2	5/8	5/8
N8-1A	1/2	1 1/16	1 1/16
N8-2	1/2	3/4	3/4
N5307	.503	.820	.095
N5582-1	.504	.875	.125
N6893	.506	1-1/8	3/16
ND89	.513	.730	.120
N5640	.520	.750	.094
N1224	.521	2-3/8	3/16
N9-1	9/16	1 1/16	1 1/16
N9-1A	9/16	3/4	3/4
N9-2	9/16	1 3/16	1 3/16
NFL-3	.555	.680	.435
N5657	.565	.812	.094
N1097-3	.572	1.250	.220

Nylomatic

Fallsington, Pennsylvania

Washers

Plain Bearings,
Washers, Stand-Offs

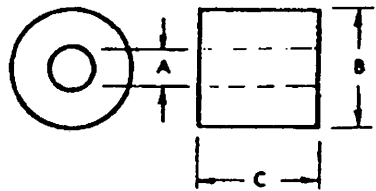


PART NO.	A HOLE	B O.D.	C LENGTH
N6170	5/64	7/64	7/64
N6366	5/64	1/8	1/32
N5803	5/64	1/4	1/16
N6725	3/32	3/16	3/64
N5229A	3/32	3/16	5/64
N5042	3/32	3/16	3/16
N6817	3/32	5/32	1/16
ND17	3/32	7/32	11/64
N5382	7/64	5/32	3/64
N6732	7/64	31/64	3/8
N6075	7/64	3/16	1/32
NFL4	7/64	7/32	1/8
N5684	7/64	3/8	3/16
ND18	7/64	7/16	1/8
N5348	7/64	31/64	3/8
N457	1/8	3/16	7/64
N6680	1/8	3/16	7/32
N481	1/8	3/16	7/16
N350	1/8	1/4	1/8
N5210	1/8	1/4	11/64
N6421	1/8	1/4	3/16
ND47	1/8	1/4	9/16
N5143	1/8	1/4	7/32
N5349	1/8	1/4	
N6078	1/8	17/64	1/2
N5854-1	1/8	3/8	7/16
N5558-2	5/32	13/64	3/64
N5451	5/32	1/4	1/4
ND72	5/32	13/64	3/64
N6063-1	5/32	9/32	1/8
N6063-2	5/32	7/16	1/8
N6064	5/32	5/8	7/32
N5451	11/64	1/4	3/32
N6029	11/64	1/4	1/4
N5765	11/64	9/32	7/16
N5770	11/64	19/64	7/16

PART NO.	A HOLE	B O.D.	C LENGTH
N401	3/16	1/4	33/64
N5218	3/16	17/64	3/32
NFL27	3/16	9/32	1/8
N5767	3/16	9/32	31/64
N5289	3/16	5/16	1/2
N235	3/16	5/16	1/4
N233-1	3/16	5/16	5/32
N233-2	3/16	5/16	17/64
ND69	3/16	11/32	1/32
NR977	3/16	3/8	1/32
N6341	3/16	3/8	3/64
NR978	3/16	3/8	1/16
NR979	3/16	3/8	3/32
NR980	3/16	3/8	1/8
ND196	3/16	3/8	3/8
ND56	3/16	3/8	3/4
N6016	3/16	5/16	1/16
N5771	3/16	5/16	13/64
ND142	3/16	5/16	5/16
N6330	3/16	5/16	19/64
N5123	3/16	5/16	31/64
N5772	3/16	5/16	11/64
N6706	3/16	7/16	1/16
N278	3/16	7/16	1/8
N6232-1	3/16	7/16	47/64
ND67	3/16	15/32	17/64
N3-2	3/16	7/16	7/16
N5137	3/16	15/32	5/16
N5648	3/16	9/16	21/64
NR975	3/16	5/8	1/16
NR981	3/16	5/8	1/8
N5181	3/16	5/8	1/4
N2083	3/16	5/8	3/8
N5165-1	3/16	5/8	9/16
N6338	3/16	41/64	11/32
N6808	3/16	3/4	1/16
N5284	3/16	3/4	5/64
NR976	3/16	3/4	5/32
N7511	3/16	3/4	3/8
N1097-1	3/16	25/32	11/32
N5442	3/16	29/32	27/64

Nylomatic

Washers



PART NO.	A HOLE	B O.D.	C LENGTH
N6293	13/64	1/4	9/64
N6083	13/64	19/64	1/8
NR883	13/64	7/16	1/16
NR982	13/64	3/8	1/32
N5957	13/64	3/8	3/4
N5321	13/64	15/32	1/8
N5126	13/64	31/64	1/8
N5085	13/64	1/2	11/64
NFL-7	13/64	5/8	3/16
NR984	7/32	9/32	1/8
N5773	7/32	5/16	11/64
NR885	7/32	3/8	1/32
N6835	7/32	3/8	3/32
N5235	7/32	11/32	7/64
N5532	7/32	3/8	13/64
N6509	7/32	3/8	19/64
N5625	7/32	5/8	1/32
NR886	7/32	5/8	1/16
NR987	7/32	5/8	1/8
NR988	7/32	5/8	1/4
NR989	7/32	5/8	1/2
NR990	7/32	23/64	1/16
N5473	15/64	9/32	19/64
ND84	15/64	19/64	1/2
N6015	15/64	5/16	1/16

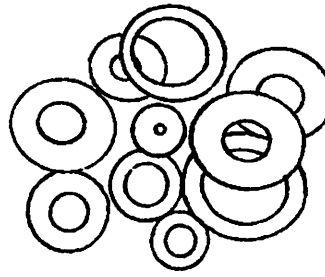
PART NO.	A HOLE	B O.D.	C LENGTH
N8775	1/4	11/32	35/64
N8834	1/4	3/8	3/64
NR891	1/4	3/8	3/32
N6605	1/4	3/8	13/64
N7970	1/4	3/8	1/4
N8938	1/4	3/8	19/64
NFL-11	1/4	3/8	23/64
ND144	1/4	3/8	3/8
N6738	1/4	3/8	35/64
N6349	1/4	3/8	1-19/32
N6849	1/4	7/16	1/16
NR892	1/4	7/16	3/32
N6232-2	1/4	7/16	5/16
N5624	1/4	7/16	3/8
N4-1A	1/4	7/16	7/16
NR894	1/4	1/2	1/32
N5712	1/4	1/2	7/32
N5437	1/4	1/2	1/4
N4-2/D443	1/4	1/2	1/2
ND106	1/4	33/64	1/4
ND31	1/4	33/64	13/16
N5551-2	1/4	35/64	1/4
ND60	1/4	9/16	1/16
N5171	1/4	41/64	1/2
NR833	1/4	5/8	1/16
ND370	1/4	5/8	3/32
N337-2	1/4	5/8	1/4
N5340	1/4	39/64	1/4
N7586	1/4	3/4	1/16
N8571	1/4	3/4	1/8
N5315	1/4	47/64	45/64
N6886	1/4	25/32	1/4

Nylomatic

Washers

Stamped Washers

- Standard material is Dupont #101 Nylon.
- Prices upon application.



Listed below are the sizes of stamped washers we can furnish without tooling charges.

These are available in nylon, Delrin*, Nylatron GS**, polyethylene and Teflon*.

Standard thicknesses are .032", .047", .062", .093" and .125".

Standard tolerances on O.D. x I.D. $\pm .004$, thickness ± 5 to 10%.

Prices upon application.

Any punching is based on the wall thickness (distance from I. D. to O. D.) being at least as great as the stock thickness.

I.D.	O.D.
1/8	3/16
1/8	1/4
1/8	3/8
1/8	1/2
5/32	1/4
3/16	1/4
3/16	3/8
3/16	1/2
13/64	9/16
1/4	3/8
1/4	1/2
1/4	9/16
1/4	5/8
1/4	3/4
5/16	1/2
5/16	9/16
5/16	5/8
5/16	3/4
3/8	1/2
3/8	9/16
3/8	5/8
3/8	3/4
3/8	1
7/16	5/8

I.D.	O.D.
7/16	3/4
7/16	7/8
7/16	1
1/2	5/8
1/2	3/4
1/2	7/8
33/64	1
9/16	11/16
9/16	3/4
9/16	7/8
9/16	1
5/8	3/4
5/8	7/8
5/8	1
41/64	1-1/8
11/16	3/4
11/16	7/8
11/16	1
11/16	1-1/8
3/4	1
3/4	1-1/8
3/4	1-1/4
3/4	1-1/2
7/8	1-1/8

I.D.	O.D.
7/8	1-1/4
7/8	1-1/2
31/32	1-1/8
15/16	1-1/4
1	1-1/4
1	1-1/2
1	1-5/8
1	1-3/4
1	1-15/16
1-1/8	1-1/2
1-1/8	1-5/8
1-1/8	1-3/4
1-1/8	1-15/16
1-1/4	1-1/2
1-1/4	1-5/8
1-1/4	1-3/4
1-1/4	1-15/16
1-3/8	1-5/8
1-3/8	1-3/4
1-3/8	1-15/16
1-1/2	1-3/4
1-1/2	1-15/16
1-11/16	2-3/4
2-3/8	3-1/2

(*Reg. trade name—DuPont Co. **Reg. trade name—Polymer Corp.)

Nylomatic