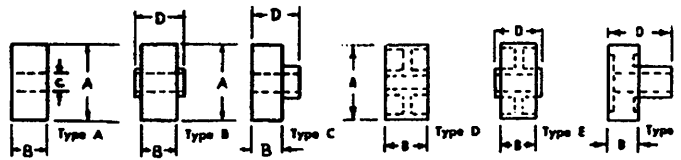


Rollers, Pulleys, Bobbins



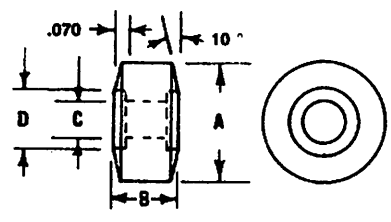
PART NO.	TYPE	O.D. A	B	I.D. C	O.L. D
ND106	A	33/64	1/4	1/4	
N5648	A	9/16	21/24	3/16	
N5340	A	39/64	1/4	1/4	
N5181	A	5/8	1/4	3/16	
ND377-2	A	5/8	1/4	1/4	
N2083	A	5/8	3/8	3/16	
N5171	A	5/8	1/2	17/64	
N51165-1	A	5/8	9/16	3/16	
ND396	A	5/8	63/69	3/16	
N5315	A	47/64	23/32	17/64	
N2110	A	47/64	1	11/32	
N1097-1	A	49/64	11/32	3/16	
N5525-2	A	13/16	27/64	5/16	
N6892	A	7/8	1/4	5/16	
N5442	A	29/32	27/64	3/16	
N1097-3	A	1-1/4	13/64	37/64	
N5151	B	3/16	7/64	3/32	1/8
NFL-25	B	3/8	5/32	13/16	11/64
N1125-1	B	7/8	5/16	3/16	11/32
N1097-2	C	1-5/64	7/32	1/4	7/32
N1097-4	C	1-3/16	13/69	5/16	7/32
N1125-2	C	1-3/16	13/64	11/32	7/32
N1097-5	C	1-1/4	15/64	11/32	7/32
NC7511	D	3/4	3/8	3/16	
N5005	D	1-1/16	1	1/4	
N5758	D	1-1/8	1-27/64	13/32	
N5347	D	1-7/16	5/8	3/16	
N6654	D	1-31/64	11/16	1/4	
N6604	D	1-39/64	7/16	1/4	
N1185	D	2-7/16	39/64	33/64	
NS1200	D	2-15/16	5/8	1/2	
N6603	E	1-53/64	11/32	7/16	13/32
N6382	E	1-15/16	15/16	19/64	63/64
N6242	E	2-1/64	1/2	1/2	35/64
N6936	F	3/4	3/8	1/4	5/8
N2016	F	1-21/64	9/32	1/4	21/32

Nylomatic
Fallsington, Pennsylvania

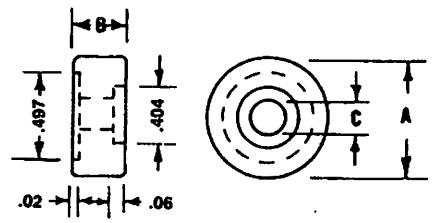
Rollers, Pulleys, Bobbins

Wheels and Rollers

- Standard material is Dupont #101 Nylon.
- Prices subject to change without notice.



Type "X"



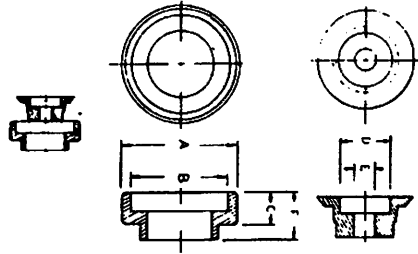
Type "Y"

PART NO.	TYPE	O.D. A	THICK B	BORE C	CT. BORE D
N5174	X	1/2	9/32	3/16	1/4
N5175	X	5/8	5/16	3/16	1/4
N5203A	Y	3/4	15/64	1/4	
N6281	X	3/4	5/32	1/4	

Nylomatic

Rollers, Pulleys, Bobbins

2-PIECE ROLLER

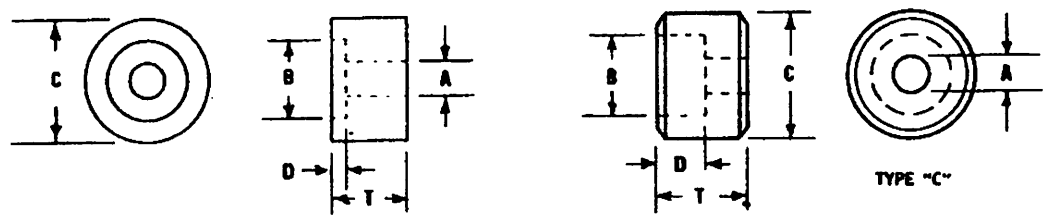


	Diam. A.	B	C	D	E	F
N1069	1-1/4	15/16	15/16	33/64	17/64	15/32
N1070	49/64	5/8	1/4	5/16	11/64	23/64

Rollers, Pulleys, Bobbins

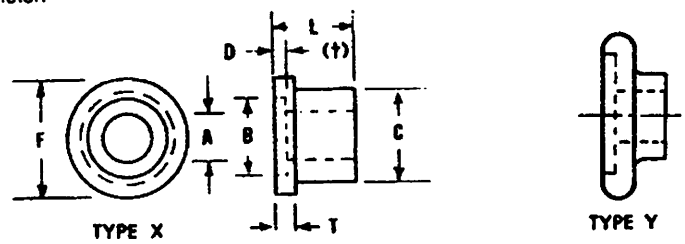
Plain and Flanged Rollers With Counterbored Holes

- Standard material is Dupont #101 Nylon.
- Prices subject to change without notice.



PART NO.	A (DIA.) HOLE	C-BORE B (DIA.)	C O.D.	D-DEPTH C-BORE	T LENGTH
N6238	.158	.344	.437	.052	3/16
N424	.194	.318	.435	1/16	1/4
(*C) N5273	.195	.412	3/4	1/16	.200
(*C) N5675	.208	1/2	.862	.148	.496
N5116	1/4	.463	.885	.265	.314
(*C) N6229	1/4	3/8	7/8	3/16	3/8
(*C) NC8005	.435	1.114	1.492	.137	.632

*C = Chamfer on outside diameter.
 * = One side only.



PART NO.	TYPE	A (DIA.) HOLE	B (DIA.) CT BORE	C O.D.	D DEPTH CT BORE	F (DIA.) FLANGE	T THK. FLANGE	L LENGTH
N6094	X	3/16	.275	.383	1/16	1/2	.022	1/8
N6045	X	.200	.395	.280	.015	.670	1/16	.196
N2006	X	.238	.302	.340	.270	.432	.057	.486
N5645	X	1/4	3/8	3/8	.078	3/4	3/16	.344
N112	X	5/16	1/2	.440	1/16	.687	1/4	.406
N5375	X	.320	1/2	.562	1/16	3/4	.100	.438
N6672	—	5/16	1/2	7/8	7/32	—	—	13/16
N6872	X	5/16	5/8	.900	1/8	1-25/32	7/32	.450
N6741	Y	1/8	1/4	5/16	1/16	15/32	9/64	11/64
N5109	Y	.315	3/8	3/8	1/32	.563	1/16	.150
N1049	Y	.360	7/8	5/8	1/16	1.215	.214	.410

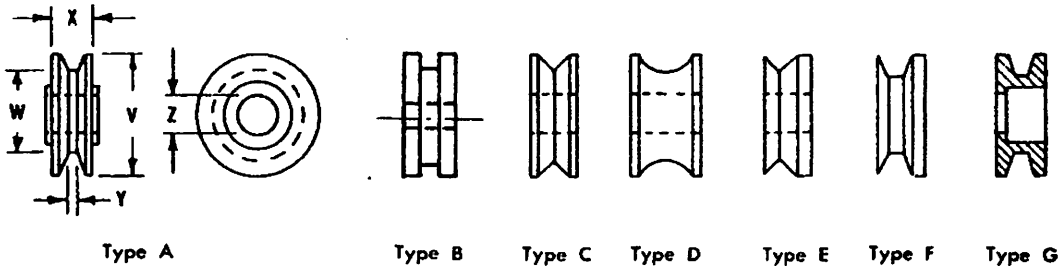
*Chamfer on counter bore side only.

Nylomatic

Rollers, Pulleys, Bobbins

Pulleys

- Standard material is Dupont #101 Nylon.
- Prices subject to change without notice.



PART NO.	TYPE	O.D. V	SLOT O.D. W	WIDTH X	SLOT WTH. Y	BORE Z
N5269	A*	.304	.165	1/8	1/32	.085
N5215	A*	.397	5/16	1/8	3/64	.07
N5727	A	5/8	5/16	7/32	1/8	.064
N8539†	A	7/8	41/64	25/64	1/8	3/16
N6832	A	1-1/8	.718	1/2	.040	.177
N6172	B	5/16	1/4	3/32	1/32	.070
N5860	B	3/8	.299	.182	.076	—
N5587	A&B	.866	5/8	.404	5/32	.194
N8839	D	1/2	3/8	1/8	—	1/8
N6396	D	1/2	3/8	.103	.143	1/8
N5359	D	1/2	.400	.308	—	1/8
N6507	D	1/2	.405	.157	3/32	3/32
NC7997	D	7/8	11/16	1/4	3/16	1/4
N1061	D	31/32	39/64	25/64	.343	1/4
N1060	D	1	.848	.380	.268	.332
N6091	D	1-7/64	7/8	5/16	.190	.192
N6222	D	1-1/8	.812	.397	.218	.638
N5747	D	1-1/4	.994	.623	.390	.508
N6855	D	1-1/4	.960	.245	1/8	.254
N6946	D	1-3/8	1-3/16	3/16	1/8	.191
N6173-7171	D	1-3/8	1.000	.344	.275	.254
N1057	D	1.400	.988	1.000	7/8	.494
N1033	D	2-5/8	2.120	.495	1/4	.506
N402	E	.680	.520	.310	—	.125
N5147	F	37/64	.345	7/32	1/16	.132
N2064	G	.775	.630	1/8	1/16	.382-.530
N7092	C	5/8	.475	.185	—	1/4

A* Pulley without hub either side.

**Has hub 5/8 O.D. x .105 Projection one side.

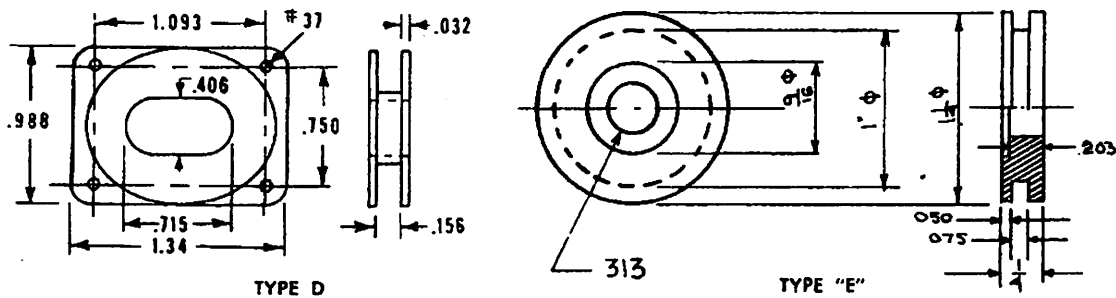
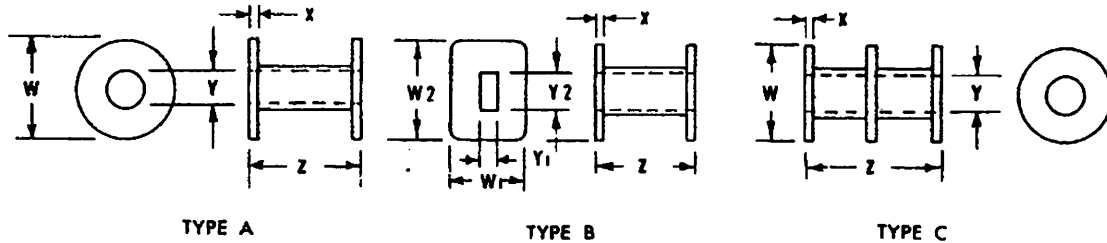
†Has hub on both sides.

Nylomatic

Rollers, Pulleys, Bobbins

Bobbins and Spools

- Standard material is Dupont #101 Nylon.
- Prices subject to change without notice.



PART NO.	TYPE	FL. DIA. W	FL. THK. X	HOLE SIZE Y	O. A. L. Z
N5853	A	1/2	1/16	1/4	.406
N6709	A	1/2	3/64	.190	1-1/16
*N6573	A	5/8	1/32	.168	.362
N5141	A	.695	1/32	1/4	3/4
N5806	A	.887	.046	.580	3/4
N6261	A	1.000	.048	.633	1.000
N6262	A	1-1/8	.048	.774	1-1/8
N6340	A	1-3/8	1/32	.593	.600
N1184	A	1-3/8	.040	1/4	41/64
N1228	A	1-3/8	1/16	21/32	1-3/16
N418	B	.422 x .496	1/32	.090 x .202	.555
N5323	C	3/4	.040	.192	.697
N467	D	see diagram			
N6153	E	see diagram			

*Has a 9/32 dia. x .020 hub on one side.

Nylomatic