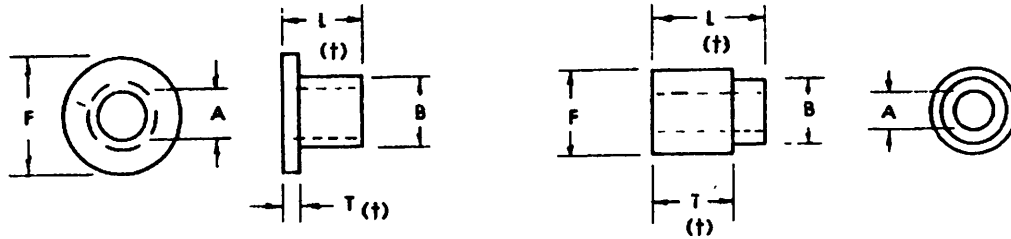


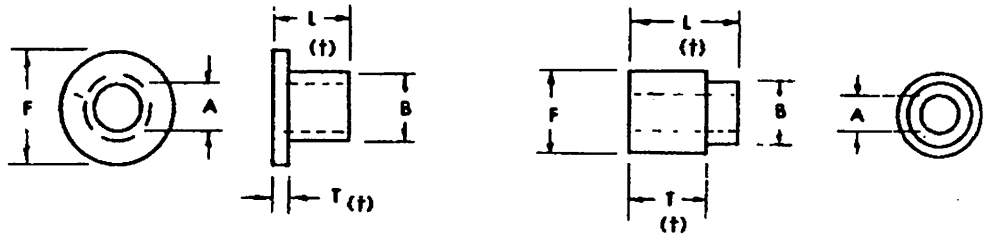
Flanged Bearings



PART NO.	I.D. A	O.D. B	FL. DIA. F	FL. THK. T	O.L. L
NFL-19	3/64	1/16	7/64	1/64	1/32
NFL-28	1/16	1/8	3/16	1/32	3/32
NR800	1/16	1/8	3/16	1/32	7/64
ND36	5/64	3/16	1/4	1/16	1/8
NR801	3/32	1/8	3/16	3/64	11/64
NR802	3/32	1/8	3/16	3/64	15/64
NR803	3/32	1/8	3/16	3/64	19/64
NR804	3/32	1/8	3/16	3/64	27/64
NR805	3/32	1/8	13/64	1/32	7/32
N2079A	3/32	9/64	13/64	1/32	3/32
N6847	3/32	5/32	7/32	1/32	15/64
NR806	3/32	11/64	9/32	3/32	7/32
NR894	7/64	9/64	15/64	3/64	5/64
NR895	7/64	9/64	15/64	3/64	3/32
NR896	7/64	9/64	15/64	3/64	7/64
NR897	7/64	9/64	15/64	3/64	9/64
NR808	7/64	9/64	15/64	3/64	11/64
NR809	7/64	9/64	15/64	3/64	13/64
NR810	7/64	9/64	15/64	3/64	15/64
NR811	7/64	9/64	15/64	3/64	19/64
NR812	7/64	9/64	15/64	3/64	27/64
NR813	7/64	9/64	15/64	3/64	35/64
NR893	7/64	9/64	5/16	1/16	5/32
N422	7/64	9/64	3/8	1/32	1/8
NR807	7/64	11/64	1/4	1/32	3/32
NR814	1/8	9/64	13/64	1/64	1/16
N5228	1/8	9/64	1/4	3/64	9/64
N5342	1/8	9/64	5/16	3/64	5/64
N5212	1/8	5/32	1/4	3/64	7/32
N5111	1/8	5/32	5/16	3/64	9/64
N6505	1/8	5/32	5/16	3/64	7/64
ND65	1/8	11/64	15/64	1/32	7/32
N267	1/8	11/64	1/4	1/4	23/64
NR815	1/8	3/16	1/4	1/32	5/32
ND3	1/8	3/16	1/4	1/32	61/64
N2033	1/8	3/16	9/32	5/16	21/64
N5722	1/8	3/16	5/16	1/32	7/32
N276	1/8	3/16	5/16	3/64	7/64
ND63	1/8	1/4	5/16	5/64	5/32
N1102	1/8	11/32	5/8	1/16	1/4

Nylomatic
Fallsington, Pennsylvania

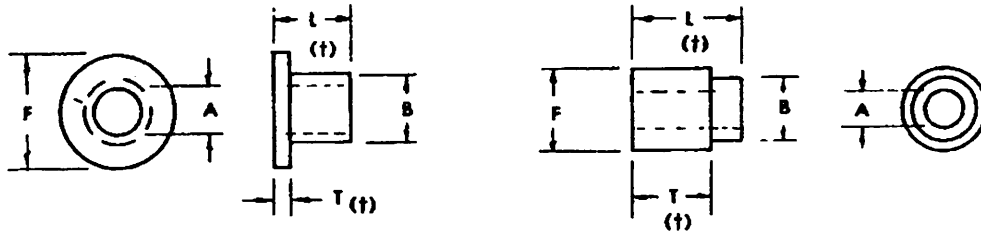
Flanged Bearings



PART NO.	I.D. A	O.D. B	FL. DIA. F	FL. THK. T	O.L. L
NFL-6	1/8	3/8	31/32	1/32	3/32
ND74	9/64	3/16	1/4	1/64	1/32
NR824	9/64	3/16	3/8	1/32	1/8
ND95	9/64	3/16	1/2	3/64	3/32
N5817	9/64	13/64	1/4	3/32	11/32
NR817	9/64	7/32	9/32	3/64	1/64
NR818	9/64	7/32	9/32	3/64	11/64
NR819	9/64	7/32	9/32	3/64	13/64
NR820	9/64	7/32	9/32	3/64	15/64
NR821	9/64	7/32	9/32	3/64	19/64
NR822	9/64	7/32	9/32	3/64	27/64
NR823	9/64	7/32	9/32	3/64	35/64
NR825	9/64	7/32	21/64	3/64	3/32
N471	9/64	15/64	3/8	3/32	11/64
ND28A	9/64	1/4	3/8	1/4	7/8
N2079B	9/64	1/4	3/8	1/16	1/8
N5794	9/64	9/32	21/64	3/32	39/64
N5484	5/32	7/32	3/8	3/64	1/4
N198	5/32	7/32	1/2	1/16	5/16
N5316-1	5/32	3/16	1/4	9/64	1/4
N3516-2	5/32	3/16	1/4	19/64	25/64
N6039/D442	5/32	1/4	5/16	1/64	1/8
ND81	5/32	1/4	5/16	1/16	1/4
N6310	5/32	1/4	5/16	1/16	1/4
N5644	5/32	1/4	5/16	1/16	11/16
NR827	5/32	1/4	3/8	1/16	3/32
N5408	5/32	1/4	3/8	3/64	15/64
NR826	5/32	1/4	3/8	5/64	1/8
NFL-20	5/32	1/4	25/64	3/64	7/16
N6232-4	5/32	1/2	5/8	1/8	9/32
NR830	11/64	13/64	11/32	1/16	3/16
NR831	11/64	13/64	11/32	1/16	13/64
NR832	11/64	13/64	11/32	1/16	5/16
NR833	11/64	13/64	11/32	1/16	7/16
NR834	11/64	13/64	11/32	1/16	9/16
NR835	11/64	13/64	11/32	1/16	11/16
NR836	11/64	13/64	11/32	1/16	13/16
N5093	11/64	1/4	5/16	1/8	13/64
N6716	11/64	1/4	5/16	1/8	5/16

Nylomatic

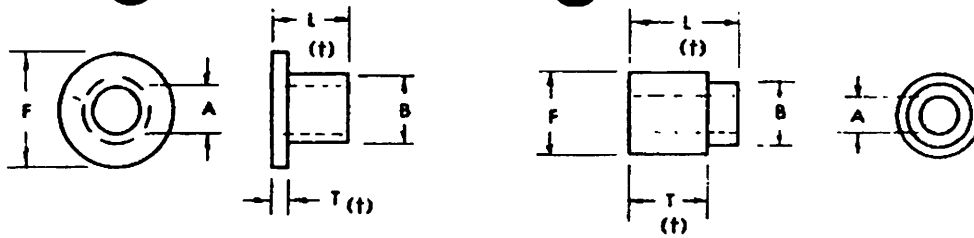
Flanged Bearings



PART NO.	I.D. A	O.D. B	FL. DIA. F	FL. THK. T	O.L. L
NFL-12	11/64	1/4	3/8	1/16	5/32
NR828	11/64	1/4	1/2	1/8	9/16
NR829	11/64	1/4	1/2	1/16	15/32
N8801	11/64	5/16	3/8	1/16	1/8
N5966	3/16	15/64	11/32	3/64	7/32
N5043	3/16	17/64	23/64	3/64	31/64
N5009	3/16	17/64	23/64	1/16	37/64
N5919	3/16	9/32	1/2	1/32	1/16
NF3-1/D171	3/16	5/16	7/16	1/16	5/16
N260	3/16	5/16	7/16	5/64	1/4
N6771	3/16	23/64	9/16	1/16	45/64
NF3-1A/D316	3/16	3/8	1/2	1/16	3/8
ND80	3/16	3/8	1/2	1/16	9/16
N5040	3/16	3/8	35/64	3/32	3/16
NF3-2	3/16	7/16	9/16	1/16	7/16
N6295	13/64	1/4	3/8	1/16	7/32
N6883	13/64	1/4	1/2	1/32	3/32
N8021	13/64	17/64	23/64	1/32	1/8
NR838	13/64	17/64	13/32	1/16	1/4
NR839	13/64	17/64	13/32	1/16	5/16
NR840	13/64	17/64	13/32	1/16	7/16
NR841	13/64	17/64	13/32	1/16	9/16
NR842	13/64	17/64	13/32	1/16	5/8
NR843	13/64	17/64	13/32	1/16	11/16
NR844	13/64	17/64	13/32	1/16	13/16
NR845	13/64	17/64	7/16	1/16	5/32
ND52	13/64	19/64	27/64	1/16	39/64
N5890	13/64	5/16	7/16	3/32	9/64
ND26/C7794	13/64	5/16	5/8	3/32	9/64
NFL-16/C8018	13/64	11/32	11/32	1/32	3/16
N6740	13/64	3/8	1/2	7/16	9/16
N6853	13/64	1/2	5/8	7/64	3/8
N288/ND290	7/32	5/16	1/2	21/64	5/8
NC7984	7/32	23/64	35/64	7/64	5/32
ND83	15/64	19/64	1/2	3/32	19/32
N5182	15/64	23/64	21/32	7/64	9/32
N5788	1/4	9/32	43/94	5/64	7/32
NR846	1/4	5/16	29/64	1/64	3/32
NR847	1/4	5/16	15/32	3/64	11/64

Nylomatic

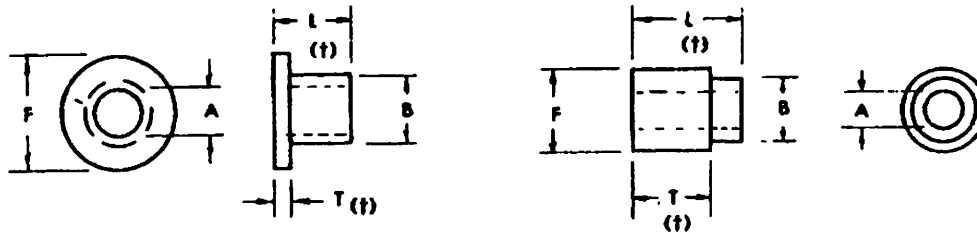
Flanged Bearings



PART NO.	I.D. A	O.D. B	FL. DIA. F	FL. THK. T	O.L. L
N5389	1/4	5/16	1/2	1/16	1/4
NR848	1/4	5/16	33/64	1/16	7/16
N458	1/4	5/16	9/16	1/16	7/64
N5187	1/4	5/16	5/8	1/32	13/64
N5214	1/4	11/32	1/2	3/64	3/8
NF4-1/D-71	1/4	3/8	1/2	1/16	3/8
N6294	1/4	3/8	3/4	1/16	19/64
N5859	1/4	24/64	1/2	1/16	7/16
ND13	1/4	25/64	1/2	1/16	7/8
NF4-1A	1/4	7/16	9/16	1/16	7/16
N2052/ND289	1/4	7/16	11/16	5/64	7/16
NF4-2/D185	1/4	1/2	5/8	1/16	1/2
N5369	1/4	1/2	55/64	3/8	1
N5067-4	17/64	5/16	7/16	1/32	1/32
N5209	17/64	5/16	7/16	1/32	25/64
NR850	17/64	5/16	33/64	1/16	1/4
NR851	17/64	5/16	33/64	1/16	5/16
NR852	17/64	5/16	33/64	1/16	7/16
NR853	17/64	5/16	33/64	1/16	9/16
NR854	17/64	5/16	33/64	1/16	11/16
NR855	17/64	5/16	33/64	1/16	13/16
ND61	17/64	23/64	9/16	1/16	13/32
NR856	17/64	23/64	11/16	1/16	3/16
NR849	17/64	3/8	27/64	1/16	15/64
ND85	17/64	3/8	31/64	1/16	3/8
ND1	17/64	3/8	33/64	1/16	7/64
N5330-2	17/64	3/8	5/8	1/16	7/32
N5330-1	17/64	3/8	5/8	1/16	17/64
N5550-1	17/64	7/16	5/8	3/16	1/2
N5041	17/64	31/64	5/8	7/64	15/64
N5142-2	17/64	33/64	63/64	5/32	5/8
ND51	17/64	33/64	1	11/64	25/64
N5154	19/64	7/16	39/64	1/32	9/16
N443	5/16	11/32	33/64	1/16	13/64
ND92	5/16	23/64	1/2	5/8	7/8
NR857	5/16	23/64	5/8	1/16	3/16
NR858	5/16	23/64	5/8	1/16	5/16
NR859	5/16	23/64	5/8	1/16	7/16
NR860	5/16	23/64	5/8	1/16	9/16
NR861	5/16	23/64	5/8	1/16	11/16
N5067-8	5/16	3/8	1/2	1/32	15/64

Nylomatic

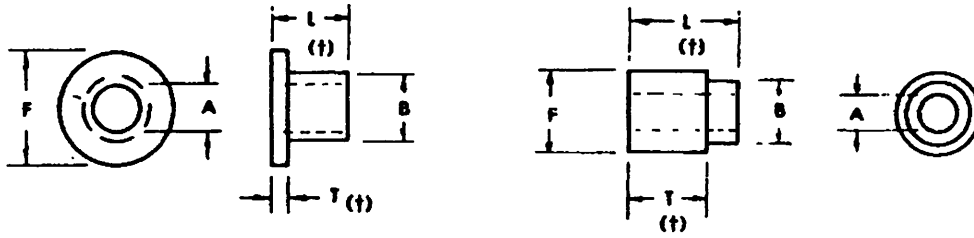
Flanged Bearings



PART NO.	I.D. A	O.D. B	FL. DIA. F	FL. THK. T	O.L. L
N6323	5/16	3/8	1/2	3/32	1/4
N6076	5/16	3/8	1/2	3/16	21/64
ND91	5/16	3/8	1/2	1-5/16	1-9/16
NF5-1	5/16	7/16	9/16	1/16	7/16
N6375	5/16	7/16	5/8	1/32	9/16
N5665	5/16	7/16	5/8	1/16	7/16
ND82	5/16	7/16	3/4	1/16	13/16
NF5-1A/ND574	5/16	1/2	5/8	1/16	1/2
NF5-2	5/16	9/16	11/16	1/16	9/16
NR862	21/64	3/8	3/4	3/64	3/32
ND84	21/64	25/64	45/64	1/32	5/64
NR863	21/64	7/16	45/64	1/16	3/16
N427	21/64	29/64	5/8	3/64	15/64
N426	21/64	29/64	45/64	3/64	9/64
N5412-1	21/64	1/2	3/4	5/64	29/64
N5834	21/64	1/2	3/4	1/8	21/32
N5145-3	21/64	9/16	43/64	1/16	19/64
NF6-1/D104	3/8	1/2	5/8	1/16	1/2
N6743	3/8	1/2	45/64	1/16	9/16
N5007-1	3/8	1/2	3/4	7/32	7/16
N5007-2	3/8	1/2	3/4	1/8	11/32
N5412-2	3/8	1/2	49/64	5/64	29/64
N5036	3/8	1/2	13/16	1/16	19/64
N2139	3/8	33/64	3/4	3/64	17/64
NF6-1A/ND217	3/8	9/16	11/16	1/16	9/16
N5901	3/8	5/8	47/64	17/64	25/64
NF6-2	3/8	5/8	3/4	1/16	5/8
N5965	3/8	5/8	3/4	15/64	1-1/8
N5007-3	25/64	1/2	3/4	3/64	1/4
ND276	25/64	1/2	1-1/8	1/16	11/64
NFL-13	25/64	33/64	5/8	1/16	3/8
ND14	25/64	33/64	5/8	1/16	7/8
N5145-2	25/64	9/16	21/32	1/16	19/64
N5403	25/64	9/16	1-1/2	1/16	5/16
NR864	25/64	37/64	3/4	3/32	13/64
N6921	25/64	5/8	3/4	1/4	1/2
NF7-1/D152	7/16	9/16	11/16	1/16	9/16
NF7-1A/ND312	7/16	5/8	3/4	1/16	5/8
NF7-2	7/16	11/16	13/16	1/16	11/16
N5145-1	29/64	9/16	21/32	1/16	11/32

Nylomatic

Flanged Bearings



PART NO.	I.D. A	O.D. B	FL. DIA. F	FL. THK. T	O.L. L
N6048	15/32	5/8	7/8	1/32	1/4
NR885	1/2	35/64	11/16	1/64	1/16
N2131	1/2	37/64	13/16	3/64	19/64
N6147*	1/2	5/8	3/4	1/16	1/4
NF8-1/D145	1/2	5/8	3/4	1/16	5/8
NF8-1A	1/2	11/16	13/16	1/16	11/16
N5136	1/2	11/16	13/16	7/64	7/16
N5588	1/2	47/64	1-1/8	3/32	3/8
NF8-2	1/2	3/4	7/8	1/16	3/4
ND79	33/64	39/64	47/64	5/32	31/64
NR887	33/64	47/64	1-1/8	1/16	5/32
NR888	33/64	63/64	15/64	1/16	5/32
N6937	35/64	23/32	51/64	1/32	5/32
NFL2-2	9/16	21/32	13/16	3/64	23/64
NF9-1	9/16	11/16	7/8	1/16	11/16
NF9-1A	9/16	3/4	15/16	1/16	3/4
NF9-2	9/16	13/16	1	1/16	13/16
N6077	39/64	13/16	1-1/4	3/32	1/2
N2129	39/64	1	1-1/8	3/32	15/32
NF-10-1/D229	5/8	3/4	15/16	1/16	3/4
NF10-1A	5/8	13/16	1	1/16	13/16
NF10-2/D389	5/8	7/8	1-1/16	1/16	7/8
N6902	5/8	7/8	1-17/64	5/64	25/32
NF11-1	11/16	13/16	1	1/16	13/16
NF11-2	11/16	15/16	1-1/8	1/16	15/16
NF12-1/D141	3/4	7/8	1-1/16	1/16	7/8
NF12-1A	3/4	15/16	1-1/8	1/16	15/16
NF12-2	3/4	1	1-3/16	1/16	1
N2136	3/4	1	1-1/2	7/64	19/32
NFL2-1	49/64	27/32	1	3/64	11/64
ND21	49/64	1	31/64	3/32	37/64
NF13-1	13/16	15/16	1-1/8	1/16	15/16
NF14-1/D248	7/8	1	1-3/16	1/16	1
NF14-2	7/8	1-1/8	1-5/16	1/16	1-1/8
N6384	7/8	1-1/4	1-7/16	1/8	1-1/2
NF15-1	15/16	1-1/16	1-1/4	1/16	1-1/16
NF15-1A	15/16	1-1/8	1-5/16	1/16	1-1/8
NF16-1/N7180	1	1-1/8	1-5/16	1/16	1-1/8
NF16-1A	1	1-3/16	1-3/8	1/16	1-3/16
NF16-2	1	1-1/4	1-7/16	1/16	1-1/4

Nylomatic