

# Screws, Nuts, Enclosures

## Threaded Rod Stock

NYLOMATIC nylon threaded rod stock is lightweight, resilient, thermally and electrically non-conductive, anti-corrosive and vibration resistant



| NYLON       |                                     |
|-------------|-------------------------------------|
| THREAD SIZE |                                     |
| 4 - 40      |                                     |
| 6 - 32      |                                     |
| 8 - 32      |                                     |
| 10 - 24     |                                     |
| 10 - 32     |                                     |
| 1/4 - 20    |                                     |
| 1/4 - 28    | <input checked="" type="checkbox"/> |
| 5/16 - 18   |                                     |
| 3/8 - 16    |                                     |
| 1/2 - 13    |                                     |
| 5/8 - 11    |                                     |
| 3/4 - 10    | <input checked="" type="checkbox"/> |

- STOCK STANDARD THREAD SIZE  
 NON-STOCK STANDARD THREAD SIZE  
Other materials and colors available on request.

Nylomatic

# Screws, Nuts, Enclosures

**Inexpensive, Disposable Closures  
Designed for use as Caps or Plugs**

## Reference Data

STANDARD TUBE AND HYDRAULIC FITTINGS

| DASH NO. | TUBING O.D. | THREAD SIZE | AS A PLUG | AS A CAP |           |
|----------|-------------|-------------|-----------|----------|-----------|
|          |             |             |           | FLARE    | FLARELESS |
| - 2      | 1/8"        | 5/16"-24    | —         | T-609    | T-609     |
| - 3      | 3/16"       | 3/8"-24     | T-609     | 613      | 613       |
| - 4      | 1/4"        | 7/16"-20    | 612       | 620      | 620       |
| - 5      | 5/16"       | 1/2"-20     | 616       | 622      | 622       |
| - 6      | 3/8"        | 9/16"-18    | 620       | 622      | 624E      |
| —        | 3/8"        | 5/8"-18     | 622       | 624      | 624E      |
| - 8      | 1/2"        | 3/4"-16     | 628       | 632      | 632       |
| -10      | 5/8"        | 7/8"-14     | 632       | 636      | 636       |
| -12      | 3/4"        | 1-1/16"-12  | 639       | 642      | 644       |
| -16      | 1"          | 1-5/16"-12  | 646       | 650      | 650       |
| -20      | 1-1/4"      | 1-5/8"-12   | T-657     | T-659    | 662       |
| -24      | 1-1/2"      | 1-7/8"-12   | 666       | 668      | 670       |
| -28      | 1-3/4"      | 2-1/4"-12   | 676       | —        | —         |
| -32      | 2"          | 2-1/2"-12   | T-679     | T-680    | T-680     |

STANDARD NPT PIPE SIZES

| THREAD SIZE TO FIT: | AS A PLUG | AS A CAP |
|---------------------|-----------|----------|
| 1/8"                | 610       | 617      |
| 1/4"                | 616       | 624      |
| 3/8"                | 622       | 628      |
| 1/2"                | 628       | 636      |
| 3/4"                | 636       | 642      |
| 1"                  | T643      | 650      |
| 1-1/4"              | T657      | 662      |
| 1-1/2"              | 664       | T667     |
| 2"                  | T681      | T679     |
| 2-1/2"              | 682       | T683     |
| 3"                  | 686       | T687     |
| 3-1/2"              | T691      | —        |
| 4"                  | T692      | T693     |

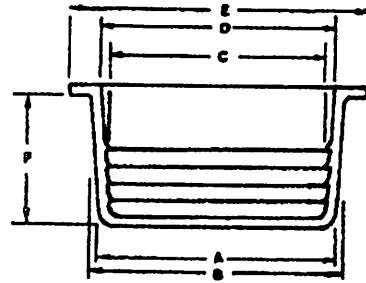
# Screws, Nuts, Enclosures

## GP Series (Non-Threaded — Tapered)

MATERIAL: Polyethylene

COLOR: Red

APPLICATION: Designed to be used as a cap or a plug.  
Heavy wall and seal rings for maximum protection.



| PART. NO. | A     | B     | C     | D     | E        | F      | APPROX. WGT. PER M (IN LBS.) | PART. NO. |
|-----------|-------|-------|-------|-------|----------|--------|------------------------------|-----------|
| 600       | .050  | .070  | —     | —     | 3/16"    | 1/4"   | .1                           | 600       |
| 602       | .115  | .180  | .040  | .125  | 7/16"    | 3/8"   | .4                           | 602       |
| 604       | .150  | .227  | .070  | .160  | 15/32"   | 7/16"  | .5                           | 604       |
| 606       | .210  | .285  | .130  | .212  | 1/2"     | 7/16"  | .6                           | 606       |
| 607       | .292  | .325  | .215  | .250  | 17/32"   | 3/8"   | .6                           | 607       |
| 608       | .270  | .340  | .180  | .257  | 17/32"   | 7/16"  | .9                           | 608       |
| 610       | .310  | .389  | .212  | .303  | 9/16"    | 7/16"  | 1.1                          | 610       |
| 612       | .355  | .430  | .261  | .338  | 5/8"     | 7/16"  | 1.1                          | 612       |
| 613       | .376  | .456  | .293  | .370  | 1/2"     | 7/16"  | 1.0                          | 613       |
| 616M      | .390  | .456  | .293  | .370  | 19/32"   | 7/16"  | 1.5                          | 616M      |
| 616       | .410  | .485  | .293  | .370  | 11/16"   | 7/16"  | 1.5                          | 616       |
| 617       | .430  | .494  | .362  | .425  | 5/8"     | 7/16"  | 1.5                          | 617       |
| 618       | .440  | .510  | .330  | .410  | 23/32"   | 7/16"  | 1.6                          | 618       |
| 620M      | .485  | .555  | .410  | .475  | 21/32"   | 7/16"  | 1.6                          | 620M      |
| 620       | .485  | .555  | .410  | .475  | 3/4"     | 7/16"  | 1.6                          | 620       |
| 622       | .535  | .615  | .460  | .535  | 13/16"   | 7/16"  | 2.1                          | 622       |
| 624M      | .580  | .667  | .505  | .585  | 13/16"   | 7/16"  | 2.2                          | 624M      |
| 624       | .600  | .670  | .505  | .585  | 15/16"   | 7/16"  | 2.2                          | 624       |
| 628       | .650  | .755  | .600  | .675  | 15/16"   | 5/8"   | 2.8                          | 628       |
| 630M      | .690  | .788  | .632  | .730  | 15/16"   | 5/8"   | 3.6                          | 630M      |
| 630       | .715  | .805  | .632  | .730  | 1"       | 5/8"   | 3.6                          | 630       |
| 632       | .760  | .850  | .670  | .750  | 1-1/16"  | 5/8"   | 3.9                          | 632       |
| 634       | .815  | .900  | .725  | .810  | 1-1/8"   | 5/8"   | 4.1                          | 634       |
| 636       | .885  | .965  | .798  | .855  | 1-3/16"  | 5/8"   | 4.7                          | 636       |
| 638       | .945  | 1.000 | .850  | .908  | 1-1/4"   | 5/8"   | 4.9                          | 638       |
| 639       | .915  | 1.040 | .830  | .960  | 1-3/16"  | 11/16" | 4.5                          | 639       |
| 640       | 1.010 | 1.075 | .925  | .980  | 1-5/16"  | 5/8"   | 5.1                          | 640       |
| 642       | 1.080 | 1.145 | .985  | 1.040 | 1-3/8"   | 5/8"   | 5.6                          | 642       |
| 644       | 1.125 | 1.200 | 1.035 | 1.107 | 1-15/32" | 5/8"   | 6.2                          | 644       |
| 646       | 1.190 | 1.265 | 1.100 | 1.195 | 1-1/2"   | 5/8"   | 6.8                          | 646       |
| 648       | 1.250 | 1.320 | 1.150 | 1.220 | 1-9/16"  | 3/4"   | 7.8                          | 648       |
| 650       | 1.305 | 1.385 | 1.250 | 1.285 | 1-5/8"   | 3/4"   | 8.7                          | 650       |
| 652       | 1.365 | 1.442 | 1.280 | 1.355 | 1-11/16" | 3/4"   | 8.7                          | 652       |
| 654       | 1.435 | 1.520 | 1.340 | 1.442 | 1-3/4"   | 3/4"   | 9.8                          | 654       |
| 656       | 1.500 | 1.585 | 1.390 | 1.465 | 1-13/16" | 3/4"   | 10.8                         | 656       |
| 658       | 1.545 | 1.635 | 1.440 | 1.534 | 1-7/8"   | 3/4"   | 11.1                         | 658       |
| 660       | 1.620 | 1.690 | 1.517 | 1.615 | 1-15/16" | 3/4"   | 11.5                         | 660       |
| 662       | 1.683 | 1.760 | 1.580 | 1.670 | 2"       | 3/4"   | 13.1                         | 662       |
| 664       | 1.730 | 1.815 | 1.640 | 1.720 | 2-1/8"   | 3/4"   | 14.1                         | 664       |
| 666       | 1.800 | 1.875 | 1.710 | 1.785 | 2-7/32"  | 3/4"   | 14.8                         | 666       |
| 668       | 1.850 | 1.935 | 1.760 | 1.840 | 2-5/16"  | 3/4"   | 15.3                         | 668       |
| 670       | 1.925 | 2.000 | 1.820 | 1.910 | 2-3/8"   | 3/4"   | 16.8                         | 670       |
| 672       | 1.980 | 2.065 | 1.890 | 1.955 | 2-7/16"  | 3/4"   | 17.3                         | 672       |
| 674       | 2.040 | 2.130 | 1.945 | 2.045 | 2-15/32" | 3/4"   | 18.1                         | 674       |
| 676       | 2.110 | 2.180 | 2.010 | 2.110 | 2-1/2"   | 3/4"   | 18.7                         | 676       |
| 678       | 2.180 | 2.305 | 2.050 | 2.095 | 2-1/2"   | 3/4"   | 19.8                         | 678       |
| 682       | 2.641 | 2.790 | 2.520 | 2.668 | 2-31/32" | 3/4"   | 28.0                         | 682       |
| 686       | 3.325 | 3.457 | 3.195 | 3.327 | 3-23/32" | 3/4"   | 42.0                         | 686       |

Nylomatic

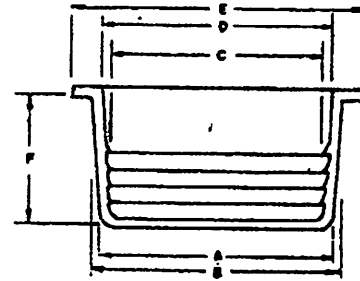
# Screws, Nuts, Enclosures

## GP—E Series (Non-Threaded — Tapered)

MATERIAL: Elastic Polyethylene

COLOR: Yellow

APPLICATION: Designed to be used as a cap or a plug.  
Heavy wall and seal rings. Flexibility of rubber at cost of plastic.



| PART. NO. | A     | B     | C     | D     | E        | F      | APPROX. WGT. PER M (IN LBS.) | PART. NO. |
|-----------|-------|-------|-------|-------|----------|--------|------------------------------|-----------|
| 602E      | .115  | .180  | .040  | .125  | 7/16"    | 3/8"   | .4                           | 602E      |
| 604E      | .150  | .227  | .070  | .160  | 15/32"   | 7/16"  | .5                           | 604E      |
| 606E      | .210  | .285  | .130  | .212  | 1/2"     | 7/16"  | .6                           | 606E      |
| 607E      | .292  | .325  | .215  | .250  | 17/32"   | 3/8"   | .6                           | 607E      |
| 608E      | .270  | .340  | .180  | .257  | 17/32"   | 7/16"  | .9                           | 608E      |
| 610E      | .310  | .389  | .212  | .303  | 9/16"    | 7/16"  | 1.1                          | 610E      |
| 612E      | .355  | .430  | .261  | .338  | 5/8"     | 7/16"  | 1.1                          | 612E      |
| 613E      | .378  | .456  | .293  | .370  | 1/2"     | 7/16"  | 1.0                          | 613E      |
| 616M-E    | .390  | .456  | .293  | .370  | 19/32"   | 7/16"  | 1.5                          | 616M-E    |
| 616E      | .410  | .485  | .293  | .370  | 11/16"   | 7/16"  | 1.5                          | 616E      |
| 617E      | .430  | .494  | .362  | .425  | 5/8"     | 7/16"  | 1.5                          | 617E      |
| 618E      | .440  | .510  | .330  | .410  | 23/32"   | 7/16"  | 1.6                          | 618E      |
| 620M-E    | .485  | .555  | .410  | .475  | 21/32"   | 7/16"  | 1.6                          | 620M-E    |
| 620E      | .485  | .555  | .410  | .475  | 3/4"     | 7/16"  | 1.6                          | 620E      |
| 622E      | .535  | .615  | .460  | .535  | 13/16"   | 7/16"  | 2.1                          | 622E      |
| 624M-E    | .580  | .667  | .505  | .585  | 13/16"   | 7/16"  | 2.2                          | 624M-E    |
| 624E      | .600  | .670  | .505  | .585  | 15/16"   | 7/16"  | 2.2                          | 624E      |
| 628E      | .650  | .755  | .600  | .675  | 15/16"   | 5/8"   | 2.8                          | 628E      |
| 630M-E    | .690  | .788  | .632  | .730  | 15/16"   | 5/8"   | 3.6                          | 630M-E    |
| 603E      | .715  | .805  | .632  | .730  | 1"       | 5/8"   | 3.6                          | 630E      |
| 632E      | .780  | .850  | .670  | .750  | 1-1/16"  | 5/8"   | 3.9                          | 632E      |
| 634E      | .815  | .900  | .725  | .810  | 1-1/8"   | 5/8"   | 4.1                          | 634E      |
| 636E      | .885  | .965  | .798  | .855  | 1-3/16"  | 5/8"   | 4.7                          | 636E      |
| 638E      | .945  | 1.000 | .850  | .908  | 1-1/4"   | 5/8"   | 4.9                          | 638E      |
| 639E      | .915  | 1.040 | .830  | .960  | 1-3/16"  | 11/16" | 4.5                          | 639E      |
| 640E      | 1.010 | 1.075 | .925  | .980  | 1-5/16"  | 5/8"   | 5.1                          | 640E      |
| 642E      | 1.080 | 1.145 | .985  | 1.040 | 1-3/8"   | 5/8"   | 5.6                          | 642E      |
| 644E      | 1.125 | 1.200 | 1.035 | 1.107 | 1-15/32" | 5/8"   | 6.2                          | 644E      |
| 646E      | 1.190 | 1.265 | 1.100 | 1.195 | 1-1/2"   | 5/8"   | 6.8                          | 646E      |
| 648E      | 1.250 | 1.320 | 1.150 | 1.220 | 1-9/16"  | 3/4"   | 7.8                          | 648E      |
| 650E      | 1.305 | 1.385 | 1.250 | 1.285 | 1-5/8"   | 3/4"   | 8.7                          | 650E      |
| 652E      | 1.365 | 1.442 | 1.280 | 1.355 | 1-11/16" | 3/4"   | 8.7                          | 652E      |
| 654E      | 1.435 | 1.520 | 1.340 | 1.442 | 1-3/4"   | 3/4"   | 9.8                          | 654E      |
| 656E      | 1.500 | 1.585 | 1.390 | 1.465 | 1-13/16" | 3/4"   | 10.8                         | 656E      |
| 658E      | 1.545 | 1.635 | 1.440 | 1.534 | 1-7/8"   | 3/4"   | 11.1                         | 658E      |
| 660E      | 1.620 | 1.690 | 1.517 | 1.615 | 1-15/16" | 3/4"   | 11.5                         | 660E      |

# Nylomatic

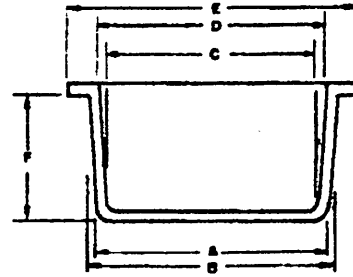
# Screws, Nuts, Enclosures

## GP-T Series (Non-Threaded — Tapered)

MATERIAL: Polyethylene

COLOR: Red

APPLICATION: Designed to be used as a cap or plug.  
Thin wall for noncritical applications



| PART NO. | A     | B     | C     | D     | E        | F      | APPROX. WGT. PER M (IN LBS.) | PART NO. |
|----------|-------|-------|-------|-------|----------|--------|------------------------------|----------|
| T-609    | .302  | .375  | .237  | .298  | 21/32"   | 3/8"   | 1.0                          | T609     |
| T-620    | .485  | .555  | .420  | .490  | 3/4"     | 7/16"  | 0.9                          | T-620    |
| T-622    | .535  | .615  | .470  | .550  | 13/16"   | 7/16"  | 1.0                          | T-622    |
| T-628    | .650  | .755  | .585  | .690  | 15/16"   | 5/8"   | 1.8                          | T-628    |
| T-632    | .760  | .850  | .695  | .785  | 1-1/16"  | 5/8"   | 2.2                          | T-632    |
| T-634    | .815  | .900  | .750  | .835  | 1-1/8"   | 5/8"   | 2.4                          | T-634    |
| T-636    | .885  | .965  | .820  | .900  | 1-3/16"  | 5/8"   | 2.7                          | T-636    |
| T-643    | 1.094 | 1.215 | 1.031 | 1.152 | 1-3/8"   | 3/4"   | 4.5                          | T-643    |
| T-646    | 1.190 | 1.265 | 1.125 | 1.200 | 1-1/2"   | 5/8"   | 3.2                          | T-646    |
| T-651    | 1.312 | 1.485 | 1.249 | 1.402 | 1-27/32" | 13/16" | 10.5                         | T-651    |
| T-657    | 1.513 | 1.600 | 1.450 | 1.537 | 1-3/4"   | 1.2"   | 4.2                          | T-657    |
| T-659    | 1.560 | 1.682 | 1.498 | 1.620 | 1-7/8"   | 3/4"   | 7.5                          | T-659    |
| T-667    | 1.900 | 1.975 | 1.830 | 1.905 | 2-3/8"   | 5/8"   | 11.5                         | T-667    |
| T-673    | 2.015 | 2.147 | 1.953 | 2.085 | 2-5/16"  | 3/4"   | 9.5                          | T-673    |
| T-675    | 2.090 | 2.200 | 2.025 | 2.135 | 2-9/16"  | 1-1/2" | 16.5                         | T-675    |
| T-677    | 2.136 | 2.312 | 2.074 | 2.250 | 2-9/16"  | 1"     | 13.7                         | T-677    |
| T-679    | 2.298 | 2.464 | 2.235 | 2.410 | 2-5/8"   | 1"     | 14.0                         | T-679    |
| T-680    | 2.395 | 2.602 | 2.333 | 2.540 | 2-31/32" | 1-1/8" | 17.0                         | T-680    |
| T-681    | 2.230 | 2.260 | 2.168 | 2.198 | 2-1/2"   | 1/2"   | 9.0                          | T-681    |
| T-683    | 2.720 | 2.990 | 2.658 | 2.922 | 3-1/8"   | 1"     | 30.0                         | T-683    |
| T-684    | 3.020 | 3.185 | 2.890 | 3.090 | 3-19/32" | 3/4"   | 31.0                         | T-684    |
| T-687    | 3.270 | 3.562 | 3.200 | 3.482 | 3-11/16" | 1-1/8" | 45.0                         | T-687    |
| T-689    | 3.455 | 3.585 | 3.365 | 3.520 | 3-15/16" | 3/4"   | 46.0                         | T-689    |
| T-691    | 3.800 | 3.900 | 3.600 | 3.700 | 4-1/2"   | 7/16"  | 45.0                         | T-691    |
| T-695    | 3.930 | 4.070 | 3.860 | 3.980 | 4-1/4"   | 3/4"   | 33.0                         | T-695    |
| T-690    | 4.090 | 4.320 | 4.010 | 4.240 | 4-5/8"   | 1-1/4" | 51.0                         | T-690    |
| T-692    | 4.270 | 4.430 | 4.160 | 4.340 | 4-7/8"   | 7/8"   | 62.0                         | T-692    |
| T-693    | 4.370 | 4.620 | 4.290 | 4.500 | 5"       | 1"     | 63.0                         | T-693    |
| T-694    | 5.000 | 5.060 | 4.860 | 4.960 | 5-3/16"  | 1/2"   | 45.0                         | T-694    |

**Nylomatic**

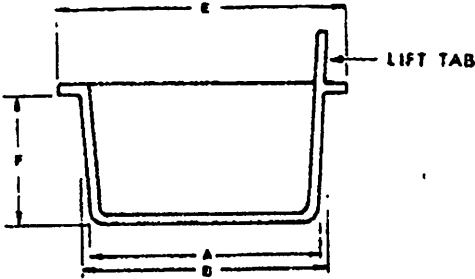
# Screws, Nuts, Enclosures

## GP-L Series (Non-Threaded — Lift Tab)

MATERIAL: Polyethylene

COLOR: Red

APPLICATION: Designed to be used as a plug with a lift tab for easy removal.



| PART. NO. | A     | B     | E        | F      | APPROX. WGT. PER M (IN LBS.) | PART. NO. |
|-----------|-------|-------|----------|--------|------------------------------|-----------|
| L-602     | .115  | .180  | 7/16"    | 3/8"   | .4                           | L-602     |
| L-604     | .150  | .227  | 15/32"   | 7/16"  | .5                           | L-604     |
| L-607     | .292  | .325  | 17/32"   | 3/8"   | .6                           | L-607     |
| L-609     | .302  | .375  | 21/32"   | 3/8"   | 1.0                          | L-609     |
| L-610     | .310  | .389  | 9/16"    | 7/16"  | 1.1                          | L-610     |
| L-612     | .355  | .430  | 5/8"     | 7/16"  | 1.1                          | L-612     |
| L-616     | .410  | .485  | 11/16"   | 7/16"  | 1.5                          | L-616     |
| L-620     | .485  | .555  | 3/4"     | 7/16"  | 1.6                          | L-620     |
| L-622     | .535  | .615  | 13/16"   | 7/16"  | 2.1                          | L-622     |
| L-624M    | .580  | .667  | 13/16"   | 7/16"  | 2.2                          | L-624M    |
| L-624     | .600  | .670  | 15/16"   | 7/16"  | 2.2                          | L-624     |
| L-630     | .715  | .805  | 1"       | 5/8"   | 3.6                          | L-630     |
| L-632     | .760  | .850  | 1-1/16"  | 5/8"   | 3.9                          | L-632     |
| L-634     | .815  | .900  | 1-1/8"   | 5/8"   | 4.1                          | L-634     |
| L-636     | .885  | .985  | 1-3/16"  | 5/8"   | 4.7                          | L-636     |
| L-639     | .915  | 1.040 | 1-3/16"  | 11/16" | 4.5                          | L-639     |
| L-643     | 1.094 | 1.215 | 1-3/8"   | 3/4"   | 4.5                          | L-643     |
| L-646     | 1.190 | 1.265 | 1-1/2"   | 5/8"   | 6.8                          | L-646     |
| L-651     | 1.312 | 1.465 | 1-27/32" | 13/16" | 10.5                         | L-651     |

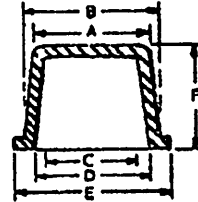
# Screws, Nuts, Enclosures

## GP-V Series (Non-Threaded — Tapered)

MATERIAL: Soft Vinyl (U.V. Stabilized and Self-Extinguishing)

COLOR: Yellow

APPLICATION: Designed to be used on pipe and tubing with internal NPT pipe threads. Tapered walls and material flexibility permit many other capping and plugging applications.



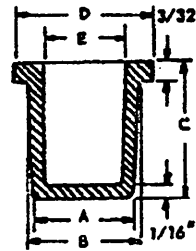
| PART. NO. | NPT. SIZE I.D. | A    | B    | C    | D    | E       | F    | WGT. PER M (IN LBS.) |
|-----------|----------------|------|------|------|------|---------|------|----------------------|
| V-101     | 1/8"           | .309 | .375 | .229 | .295 | 1/2"    | .415 | 1.1                  |
| V-102     | 1/4"           | .436 | .500 | .354 | .420 | 5/8"    | .415 | 1.6                  |
| V-103     | 3/8"           | .545 | .625 | .465 | .545 | 3/4"    | .500 | 2.5                  |
| V-104     | 1/2"           | .732 | .812 | .642 | .722 | 15/16"  | .500 | 3.6                  |
| V-105     | 3/4"           | .934 | .952 | .844 | .862 | 1-3/16" | .500 | 5.3                  |

## GP-V Series (Non-Threaded — Tapered)

MATERIAL: Soft Vinyl, (U.V. Stabilized and Self-Extinguishing)

COLOR: Yellow

APPLICATION: As a Plug the tapered sides make it easy to apply and the heavy flange, easy to remove. As a Cap the straight sided interior provides a firm grip on tubing which has an O.D.-1/32" larger than the "E" dimension. The flange allows for easy removal.



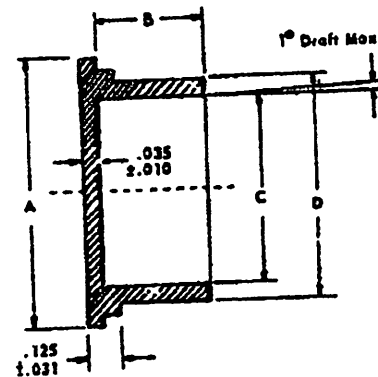
| PART. NO. | TUBE SIZE I.D. | A    | B     | C      | D       | E      | WGT. PER M (IN LBS.) |
|-----------|----------------|------|-------|--------|---------|--------|----------------------|
| V-53      | 3/16"          | .182 | .195  | 19/32" | 5/16"   | 3/32"  | .7                   |
| V-54      | 1/4"           | .245 | .260  | 21/32" | 3/8"    | 1/8"   | 1.1                  |
| V-55      | 9/32"          | .275 | .290  | 19/32" | 1/2"    | 9/64"  | 1.2                  |
| V-56      | 5/16"          | .307 | .322  | 21/32" | 7/16"   | 3/16"  | 1.7                  |
| V-58      | 3/8"           | .370 | .385  | 21/32" | 1/2"    | 1/4"   | 2.0                  |
| V-59      | 13/32"         | .400 | .415  | 19/32" | 5/8"    | 9/32"  | 2.2                  |
| V-60      | 7/16"          | .432 | .447  | 21/32" | 9/16"   | 5/16"  | 2.8                  |
| V-62      | 1/2"           | .490 | .510  | 21/32" | 5/8"    | 3/8"   | 3.6                  |
| V-64      | 9/16"          | .557 | .572  | 21/32" | 11/16"  | 7/16"  | 4.2                  |
| V-66      | 5/8"           | .620 | .635  | 21/32" | 3/4"    | 1/2"   | 4.7                  |
| V-68      | 11/16"         | .682 | .697  | 21/32" | 13/16"  | 9/16"  | 5.3                  |
| V-70      | 3/4"           | .745 | .760  | 21/32" | 7/8"    | 5/8"   | 6.2                  |
| V-72      | 13/16"         | .807 | .822  | 21/32" | 15/16"  | 11/16" | 6.4                  |
| V-74      | 7/8"           | .870 | .885  | 21/32" | 1"      | 3/4"   | 7.5                  |
| V-76      | 15/16"         | .932 | .947  | 21/32" | 1-1/16" | 13/16" | 7.8                  |
| V-78      | 1"             | .995 | 1.010 | 21/32" | 1-1/8"  | 7/8"   | 8.4                  |

**Nylomatic**

# Screws, Nuts, Enclosures

## FC Series (Non-Threaded — Electrical Connectors)

MATERIAL: Polyethylene MIL-P-3803  
 COLOR: MS DASH Y — Yellow  
 MS DASH R — Red  
 APPLICATION: Designed to fit Electrical Connectors.



### MS90376

| PART NO. | MS90376 DASH # | A<br>±.031 | B<br>±.031 | C<br>±.010 | D<br>±.020 | APPROX. WGT. PER M |
|----------|----------------|------------|------------|------------|------------|--------------------|
| FC-707   | - 8Y           | .670       | .625       | .413       | .483       | 1.9                |
| FC-709   | -10Y           | .750       | .625       | .530       | .595       | 2.1                |
| FC-711   | -12Y           | .860       | .625       | .655       | .715       | 2.6                |
| FC-713   | -14Y           | 1.031      | .625       | .785       | .845       | 3.7                |
| FC-715   | -16Y           | 1.125      | .625       | .893       | .963       | 4.5                |
| FC-717   | -18Y           | 1.250      | .625       | 1.028      | 1.088      | 4.8                |
| FC-719   | -20Y           | 1.406      | .625       | 1.150      | 1.215      | 6.3                |
| FC-721   | -22Y           | 1.500      | .625       | 1.270      | 1.340      | 6.8                |
| FC-723   | -24Y           | 1.640      | .625       | 1.390      | 1.460      | 8.0                |
| FC-727   | -28Y           | 1.875      | .625       | 1.648      | 1.718      | 10.0               |
| FC-731   | -32Y           | 2.125      | .625       | 1.890      | 1.970      | 12.5               |
| FC-735   | -36Y           | 2.340      | .625       | 2.140      | 2.210      | 14.2               |
| FC-739   | -40Y           | 2.600      | .625       | 2.380      | 2.450      | 17.5               |
| FC-743   | -44Y           | 2.875      | .625       | 2.630      | 2.700      | 21.0               |
| FC-747   | -48Y           | 3.125      | .625       | 2.880      | 2.950      | 24.6               |
| FC-708   | - 8R           | .740       | .500       | .460       | .540       | 1.8                |
| FC-710   | -10R           | .840       | .500       | .605       | .665       | 2.4                |
| FC-712   | -12R           | .970       | .500       | .720       | .775       | 3.0                |
| FC-714   | -14R           | 1.125      | .500       | .850       | .905       | 4.0                |
| FC-716   | .16R           | 1.220      | .500       | .973       | 1.035      | 4.8                |
| FC-718   | -18R           | 1.330      | .562       | 1.093      | 1.155      | 4.8                |
| FC-720   | -20R           | 1.465      | .562       | 1.231      | 1.301      | 5.2                |
| FC-722   | -22R           | 1.590      | .562       | 1.340      | 1.410      | 6.5                |
| FC-724   | -24R           | 1.700      | .562       | 1.483      | 1.533      | 7.2                |
| FC-728   | -28R           | 1.950      | .562       | 1.715      | 1.790      | 9.2                |
| FC-732   | -32R           | 2.220      | .562       | 1.965      | 2.040      | 10.5               |
| FC-736   | -36R           | 2.435      | .600       | 2.215      | 2.290      | 14.0               |
| FC-740   | -40R           | 2.660      | .600       | 2.440      | 2.530      | 19.2               |
| FC-744   | -44R           | 2.960      | .600       | 2.720      | 2.812      | 22.8               |
| FC-748   | -48R           | 3.225      | .600       | 2.960      | 3.050      | 26.7               |

Nylomatic



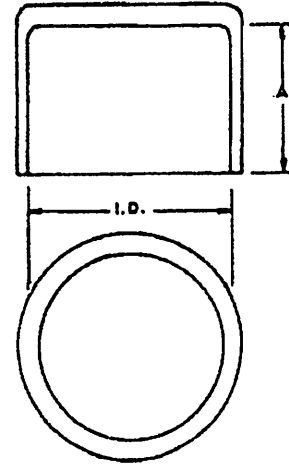
# Screws, Nuts, Enclosures

## CAPS - TC Series (Non-Threaded — Tubing)

MATERIAL: Polyethylene

COLOR: Red

APPLICATION: Designed to fit O.D. of tubing sizes listed.



| PART NO.  | I.D.    | A      | PART NO.  |
|-----------|---------|--------|-----------|
| TC-1/4    | 1/4"    | 7/8"   | TC-1/4    |
| TC-3/8    | 3/8"    | 7/8"   | TC-3/8    |
| TC-1/2    | 1/2"    | 7/8"   | TC-1/2    |
| TC-9/16   | 9/16"   | 7/8"   | TC-9/16   |
| TC-9/16A  | 9/16"   | 1-1/8" | TC-9/16A  |
| TC-5/8    | 5/8"    | 7/8"   | TC-5/8    |
| TC-3/4    | 3/4"    | 7/8"   | TC-3/4    |
| TC-7/8    | 7/8"    | 3/8"   | TC-7/8    |
| TC-7/8A   | 7/8"    | 5/8"   | TC-7/8A   |
| TC-7/8B   | 7/8"    | 7/8"   | TC-7/8B   |
| TC-7/8C   | 7/8"    | 1-1/4" | TC-7/8C   |
| TC-1      | 1"      | 5/8"   | TC-1      |
| TC-1A     | 1"      | 7/8"   | TC-1A     |
| TC-1-1/16 | 1-1/16" | 7/8"   | TC-1-1/16 |
| TC-1-1/8  | 1-1/8"  | 7/8"   | TC-1-1/8  |
| TC-1-1/4  | 1-1/4"  | 7/8"   | TC-1-1/4  |
| TC-1-5/16 | 1-5/16" | 7/8"   | TC-1-5/16 |
| TC-1-3/8  | 1-3/8"  | 7/8"   | TC-1/38   |
| TC-1-1/2  | 1-1/2"  | 7/8"   | TC-1-1/2  |
| TC-1-5/8  | 1-5/8"  | 7/8"   | TC-1/58   |
| TC-1-3/4  | 1-3/4"  | 7/8"   | TC-1-3/4  |
| TC-2      | 2"      | 7/8"   | TC-2      |
| TC-3      | 3"      | 11/16" | TC-3      |
| TC-3-1/2  | 3-1/2"  | 1"     | TC-3-1/2  |

**Nylomatic**